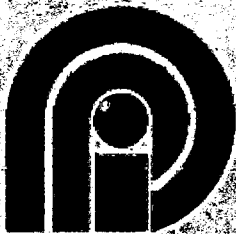


Walton County Jail and Sheriff's Office

Facility Master Plan

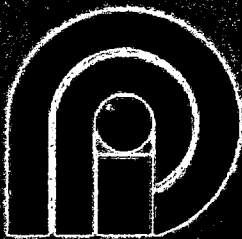
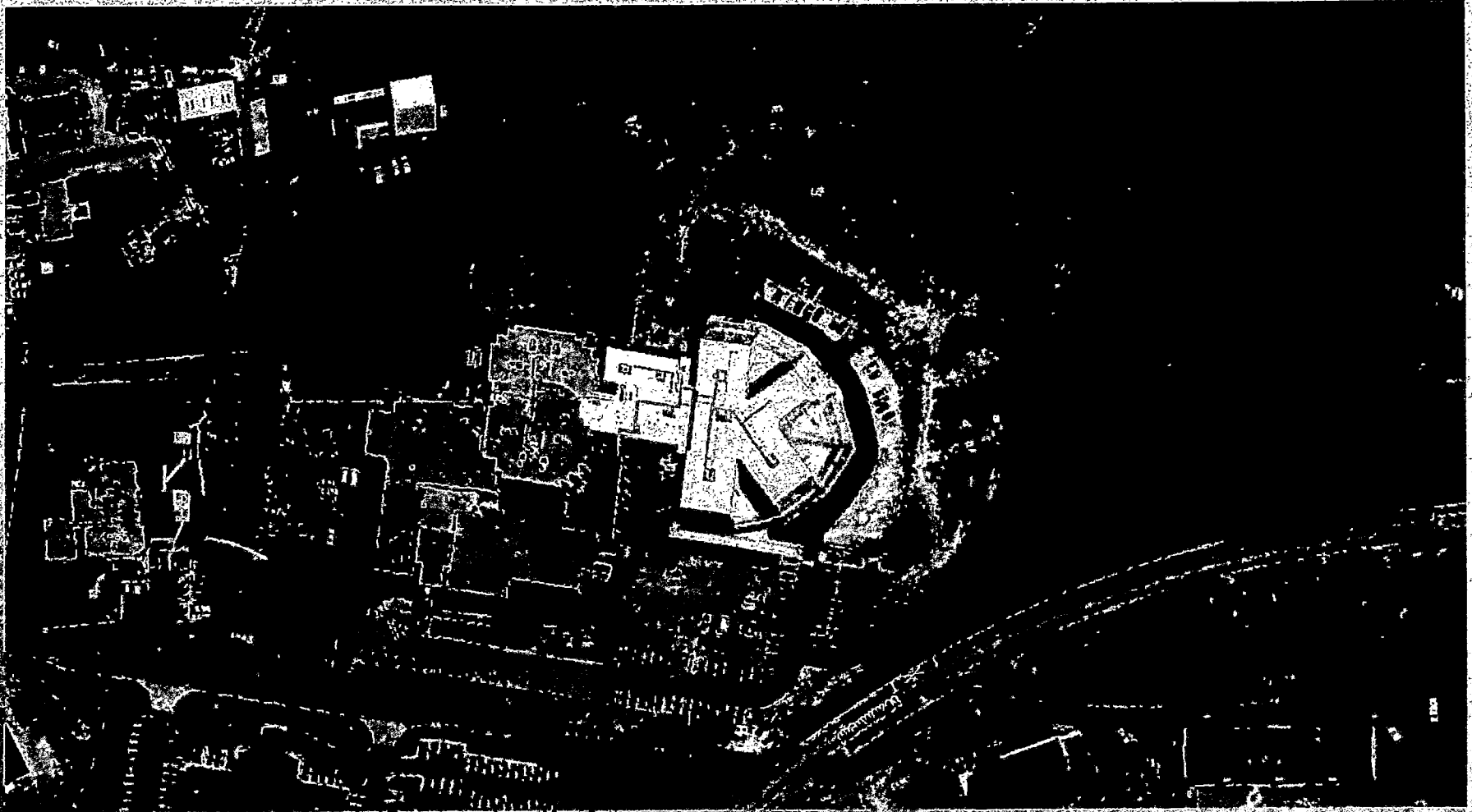


December 1, 2009



Precision Planning, Inc.
planners, engineers, architects & surveyors

Existing Facility Aerial View

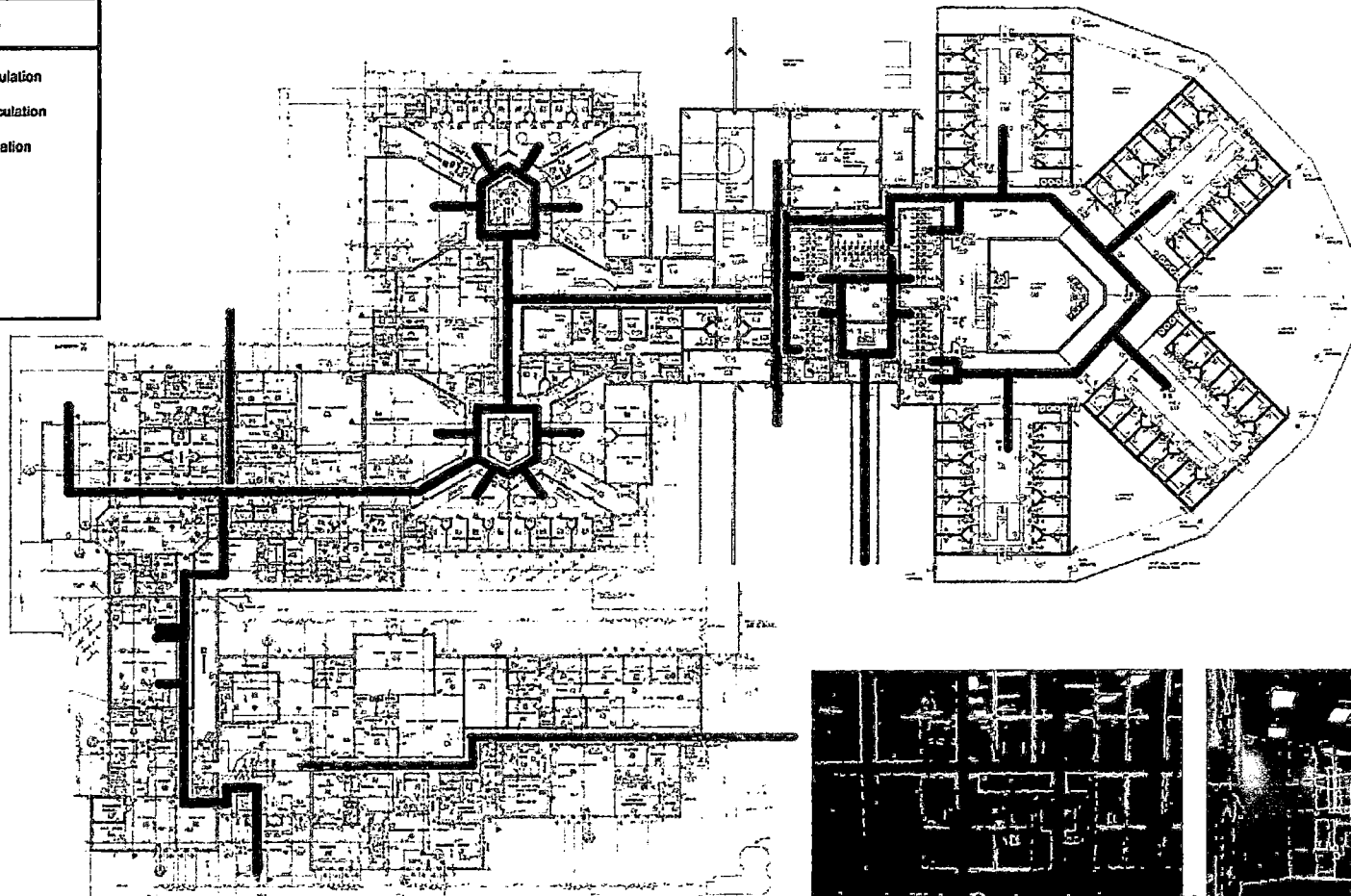


Precision Planning, Inc.
planners, engineers, architects & surveyors

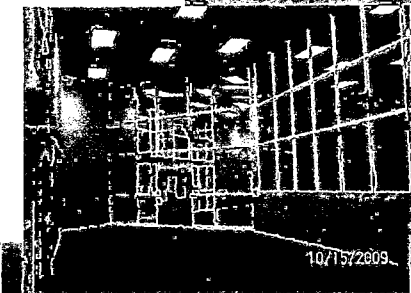
Existing Facility Plan View

LEGEND

- Public Circulation
- Inmate Circulation
- Staff Circulation

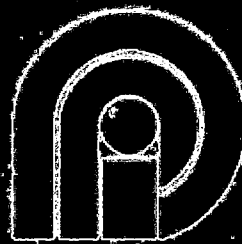


10/15/2009



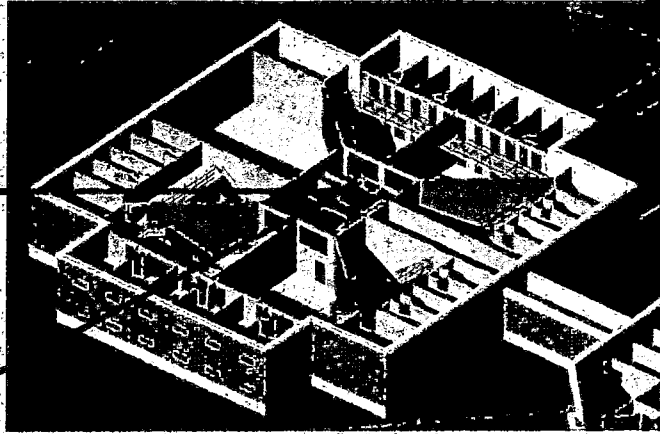
10/15/2009

2004 Housing Addition



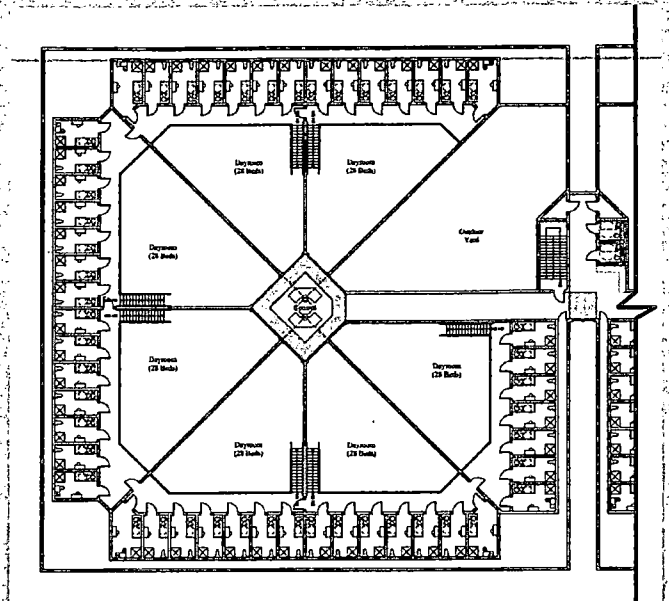
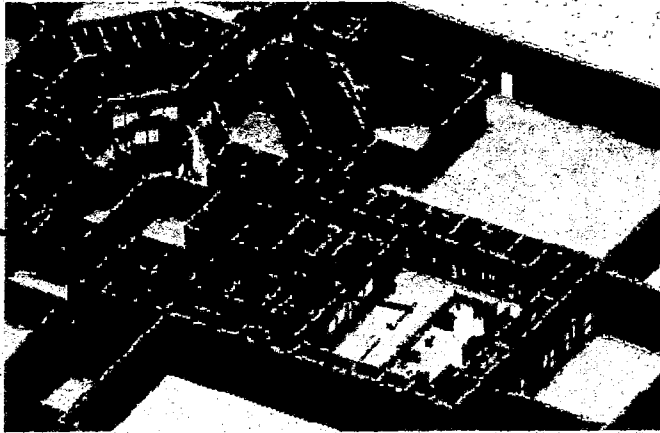
Precision Planning, Inc.
planners, engineers, architects & surveyors

Recommended Facility

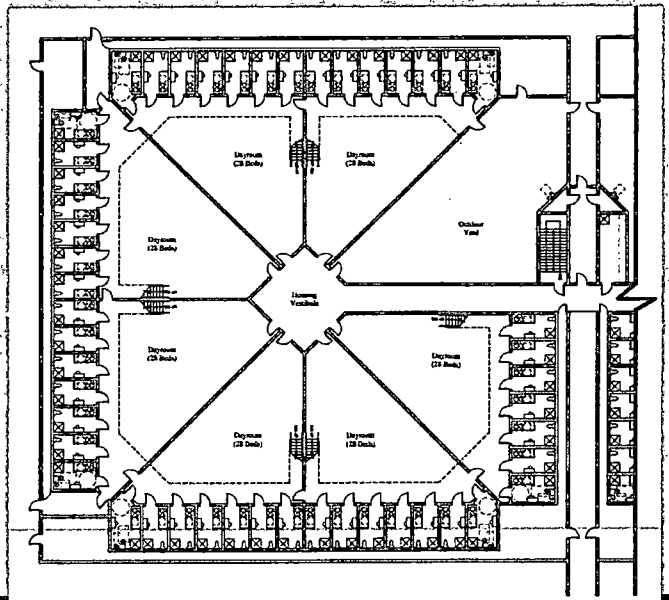


New Facility Design Goals:

- Inmate Housing for 10-12 Years
- Jail Support for 20 Years
- Sheriff's Administration for 20 Years



Mezzanine Level

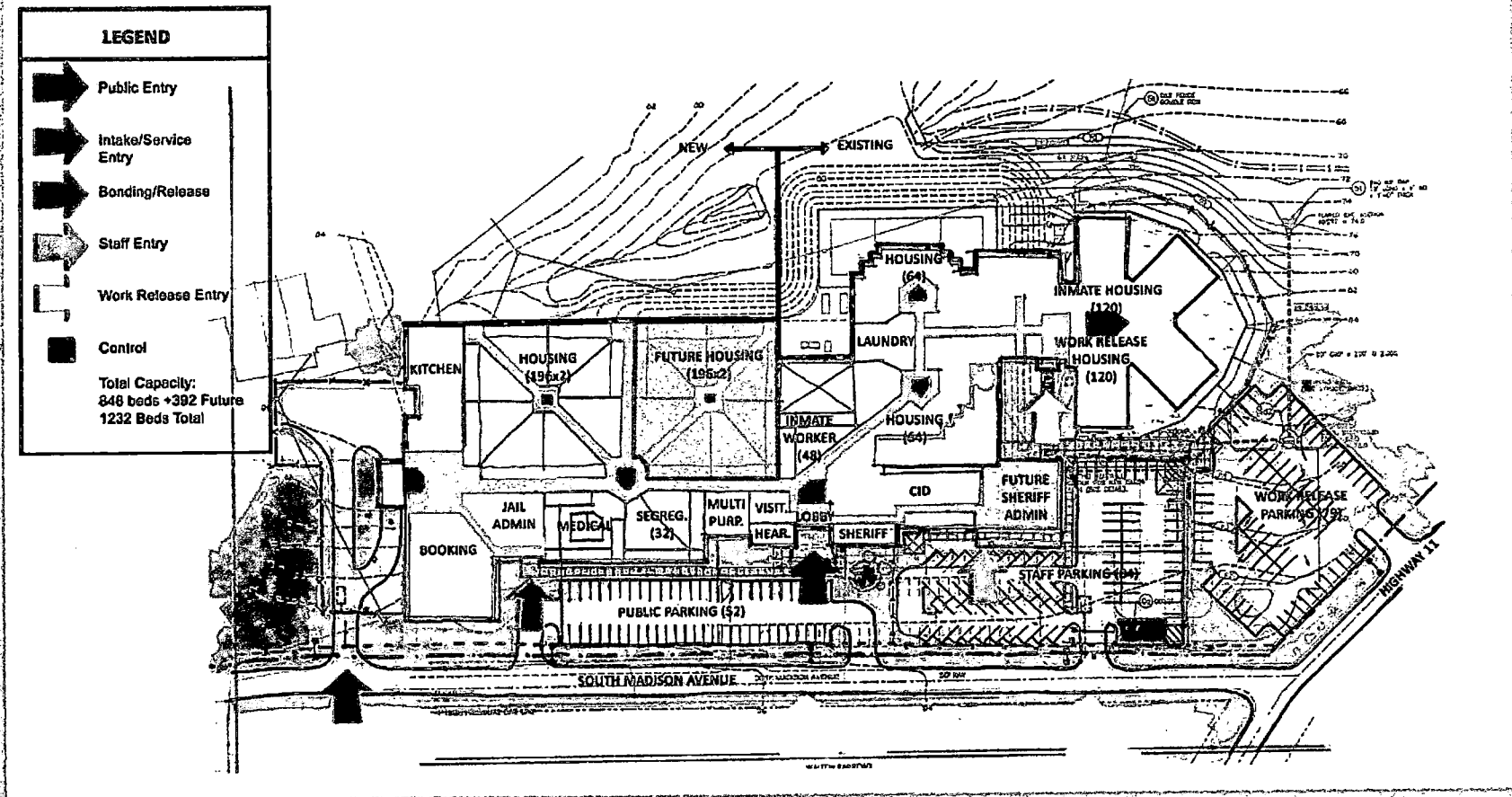


Lower Level



Precision Planning, Inc.
planners, engineers, architects & surveyors

Master Plan Option #1

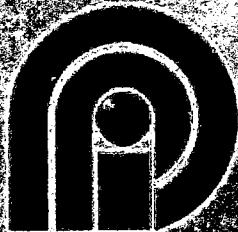


Pros

- Maximum Utilization of Existing Facility
- Direct Connection to Sheriff's Administration
- Convenient, Segregated Parking
- Least Costly Option

Cons

- Multi-level Housing/Vertical Circulation
- Complex Renovation of Existing Facility
- Demolition of Buildings, Relocation of Drive
- More Staffing Required



Precision Planning, Inc.
planners, engineers, architects & surveyors

Summary of Cost Considerations

Option #1 –North Addition/Renovation **\$29 Million**

Also Consider:

- Additional Staff Required
- Disruption of Adjacent Facilities

Option #2 –South Addition **\$38 Million**

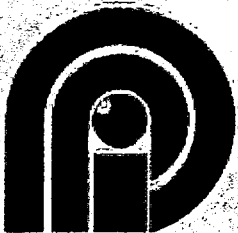
Also Consider:

- Relocation of Stream for Future Expansion

Option #3 –New 800-Bed Jail **\$50 - \$60 Million**

Also Consider:

- Identification and Acquisition of Property



Precision Planning, Inc.
planners, engineers, architects & surveyors

